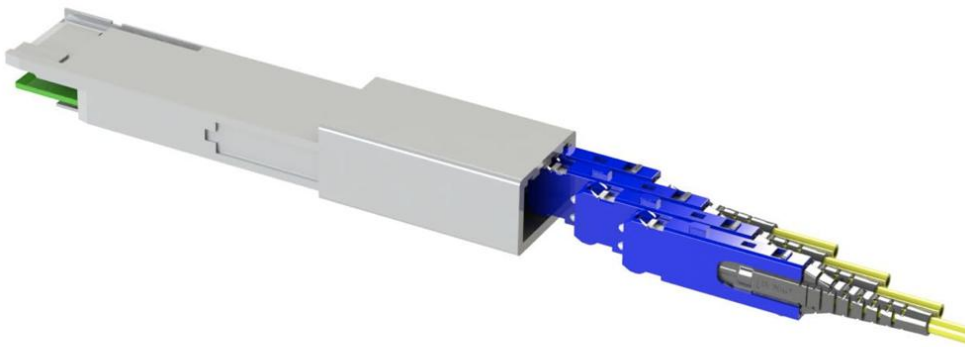


MDC Transceivers



Optical transceiver and connector suppliers have adopted and licensed the MDC & SN connector technology. Licensees include Applied Optoelectronics Inc., Cisco, Delta, Eoptolink, Juniper Networks, Molex, and Sicoya.

Specifications are eight lanes that operate at up to 25 Gbits/sec or 50 Gbits/sec—supporting 200 Gbits/sec and 400 Gbits/sec, respectively, in aggregate.

US Conec states that, “Multiple emerging MSAs (Multi Source Agreement) have defined port-breakout architectures that require a duplex optical connector with a smaller footprint than the LC connector. The reduced size of the MDC connector will allow a single-array transceiver to accept multiple MDC patch cables, which are individually accessible directly at the transceiver interface.

The format supports four individual MDC cables in a QSFP footprint and two individual MDC cables in an SFP footprint. The increased connector density at the module/panel minimizes hardware size, realizing reduced capital and operational expense.